



TENSION SAFETY DEVICE INSTALLATION INSTRUCTIONS

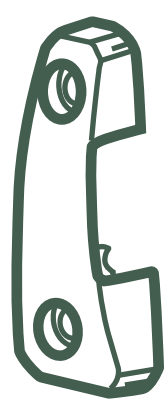
FOR CONTINUOUS LOOP CHAIN OPERATED ROMAN SHADES



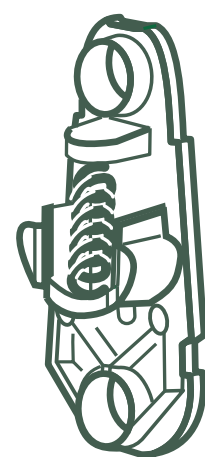
Check installation guide on Youtube®

PARTS INCLUDED WITH THE TENSION SAFETY DEVICE

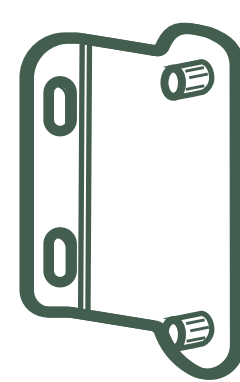
Cover



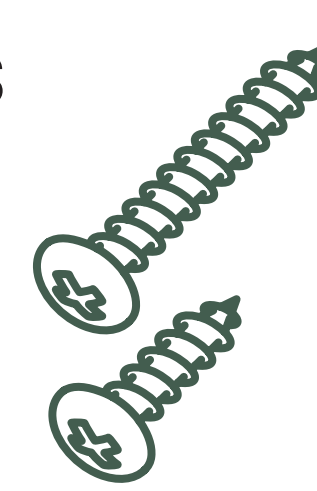
Base



Wall Bracket



Screws

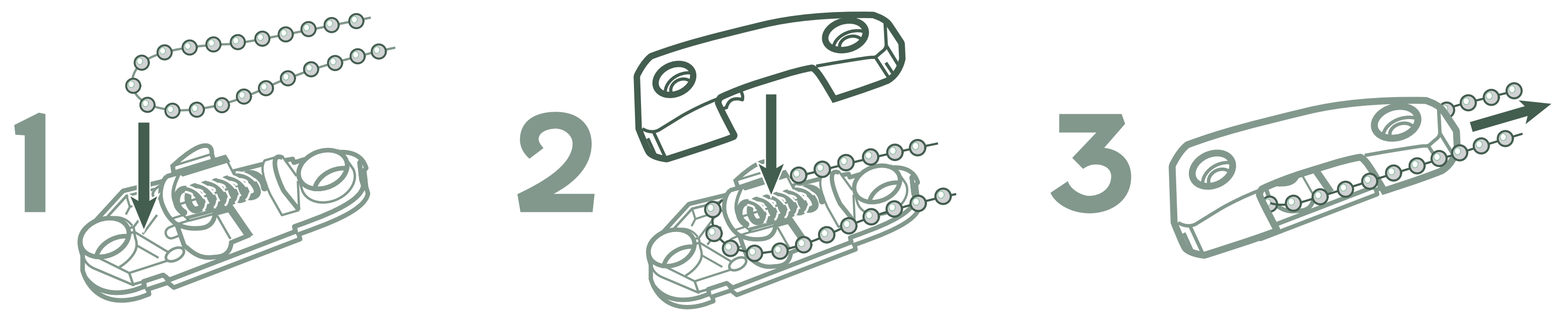


Safety Label



INSTALLATION

1. Place bead chain in the bottom groove of the Tension Safety Device base.
2. Snap cover onto the base.
3. While keeping the cover in place, pull the chain out of the groove.



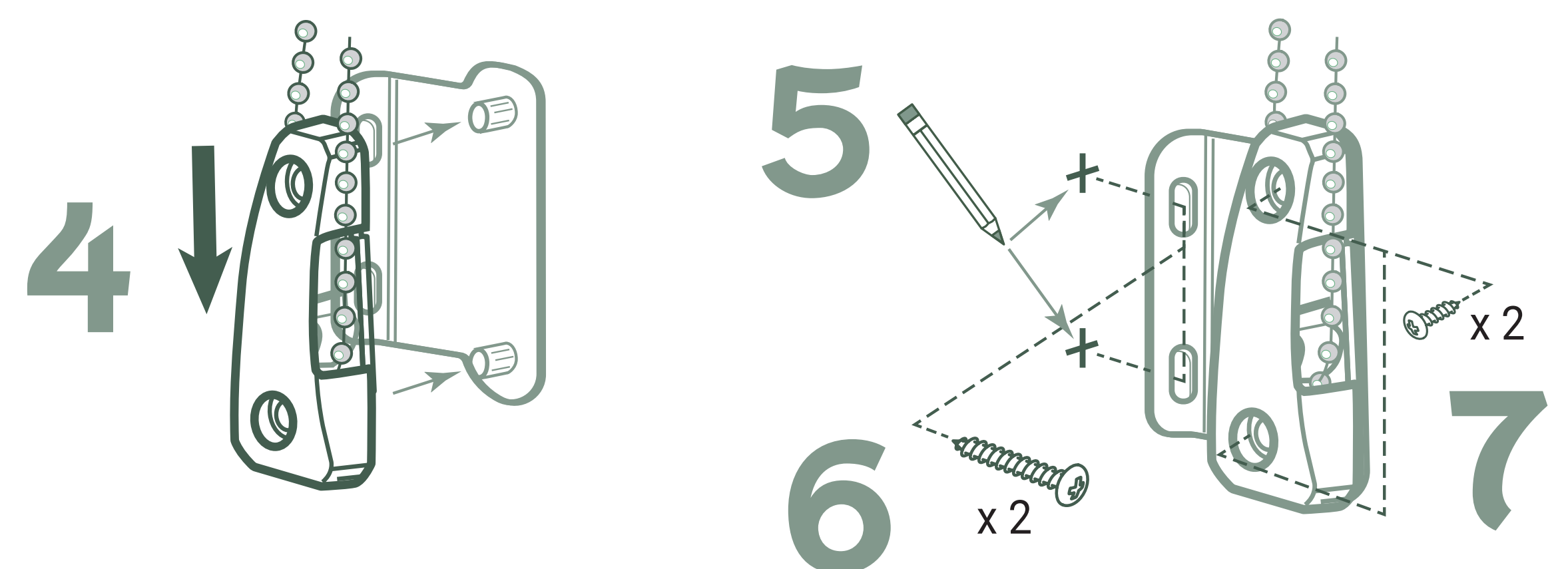
Inside Mount

4. Pull the Tension Safety Device straight down until the chain is fully tensioned. The plunger insert will be fully raised.
5. Mark the screws hole locations.
6. Screw the Tension Safety Device to the window frame.



Wall Mount

4. Put the Tension Safety Device into the bracket. Pull the Tension Safety Device and bracket straight down until the chain is fully tensioned. The plunger insert will be fully raised.
5. Mark the screws hole locations.
6. Screw the Tension Safety Device to the wall.
7. Using the small screws, attach the Tension Safety Device to the bracket.



Still have questions? Customer Care is available at 800-256-5005.

THANK YOU FOR CHOOSING REGAL DRAPES