



# **Urban Collection Installation Instructions**

# First things first

*Measure the length of your drapery/curtain and follow these instructions.*

## **Wall Mount for Pinch Pleat.**

Length of drape + **2 1/16"**. This addition is where you place the first screw of the wall bracket. The smallest hole on top.  
(i.e. length of drape **100"** + **2 1/16"** = **102 1/16"**)

## **Flush Ceiling Mount for Pinch Pleat.**

Screw flush ceiling bracket directly to the ceiling. (Use screws and anchors [provided])

## **Wall Mount for Ripplefold.**

Length of drape + **1 9/16"**. This addition is where you place the first screw of the wall bracket. The smallest hole on top.  
(i.e. length of drape **100"** + **1 9/16"** = **101 9/16"**)

## **Flush Ceiling Mount for Ripplefold.**

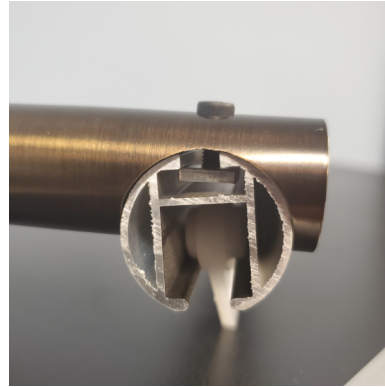
Screw flush ceiling bracket directly to the ceiling. (Use screws and anchors [provided])

***\*These measurements are for a 1/4" space in the bottom.***



### TOOLS NEEDED:

- Tape Measure
- Hex Key Set
- Stud Finder
- Protective Eye Gear
- Drill w/Phillips Tip
- Pen or Pencil
- Drill Bit for anchors
- Screws and anchors for any application



### STEP 4:

Slide the arm of the wall bracket on the top channel of the H-rail as shown.



Screw Plate for wall brackets

### STEP 1:

With the smaller hole on top measure (see **Page 1**) and mark.

Please use provided screws and anchors and screw to the wall.

**For Ceiling Brackets See Page 4.**



### Step 5:

Slide all the arms of the brackets to their position according the spacing of plates screwed on the wall.



### STEP 2:

Place the decorative plate cover.



### STEP 6:

Mount the arms of the bracket to the metal plate.



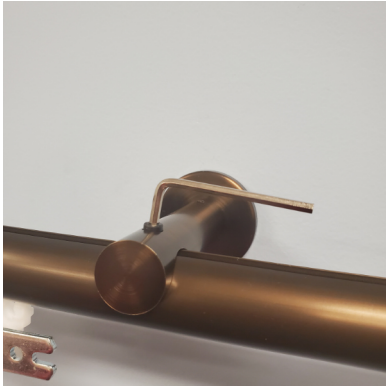
### STEP 3:

Unscrew finial on one side only to slide the arm of brackets into the top channel of the H-rail.



### STEP 7:

Tighten the hex screw closest to the bracket plate first on all brackets.



**STEP 8:**

Once on its right position tighten the screw on the H-Rail.



**RIPPLEFOLD:**

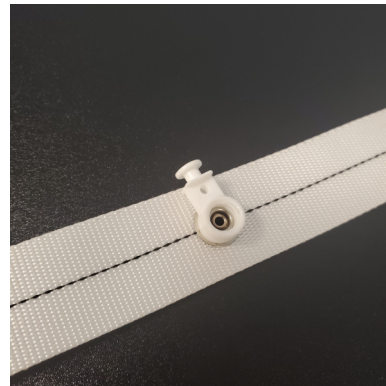
For Ripplefold Style the curtain/drape will have the snap tape sewn into the curtain.

The ripplefold carriers will click into the snaps on the snap tape. (***This will be already done for you***)



**Step 9:**

Put back the finial back on H-rail and tighten it.



**Ripplefold:**

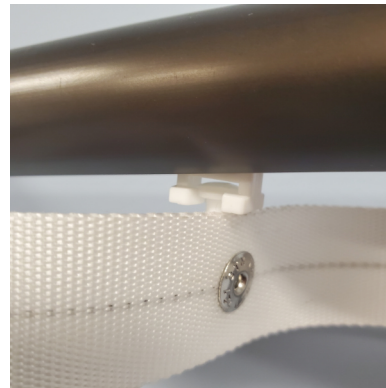
As shown in the picture is how the carriers will click into the snap tape that should be already sewn into your curtain/drape.

There are two sides of the carrier so if one its a bit hard to snap just turn it to the other side and should click right in.



**STEP 10:**

Your Urban H-Rail should be ready to place the curtain up. Always keep in mind that finding studs are best practice and using wall anchors when possible.



**STEP 12:**

\*Ripplefold

Clip in your curtain with the ripplefold carrier into the square base as shown in the picture.



**STEP 11:**

Your Curtain/Drapes should have hooks where you will hook into the pinch pleat carriers as show.(Curtain not shown)

Enjoy your new drapery hardware.

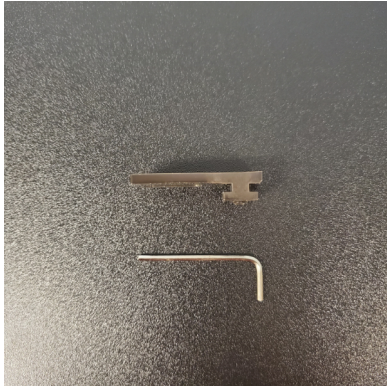


**STEP 13:**

\*Ripplefold

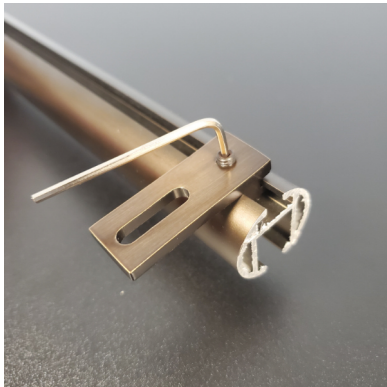
Your Curtain/Drapes should be ready. Enjoy your new drapery hardware.





### **Flushed Ceiling Bracket:**

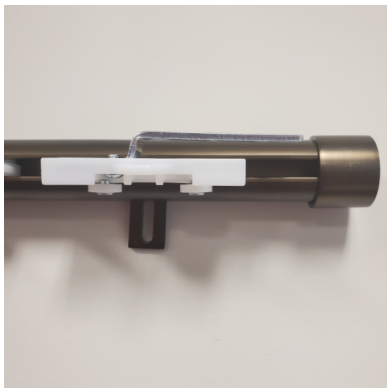
For Flushed Ceiling Bracket application follow the measurements on page 1. The brackets with its hex crew should be with your new drapery hardware.



### **STEP 1:**

Slide and place the flushed ceiling brackets on the position that you wish to place them in.

Secure the bracket into position using the hex screw.



### **STEP 2:**

Mount your Flushed Ceiling Bracket directly into the ceiling.

Make sure that it mounted securely. Finding studs and using anchors if needed.



### **STEP 3:**

Your Urban Collection Drapery Hardware should be ready to put the curtains/drapes on. Please follow Step 11-13 According to which type of curtain/drape you received.

Enjoy your new drapery hardware.