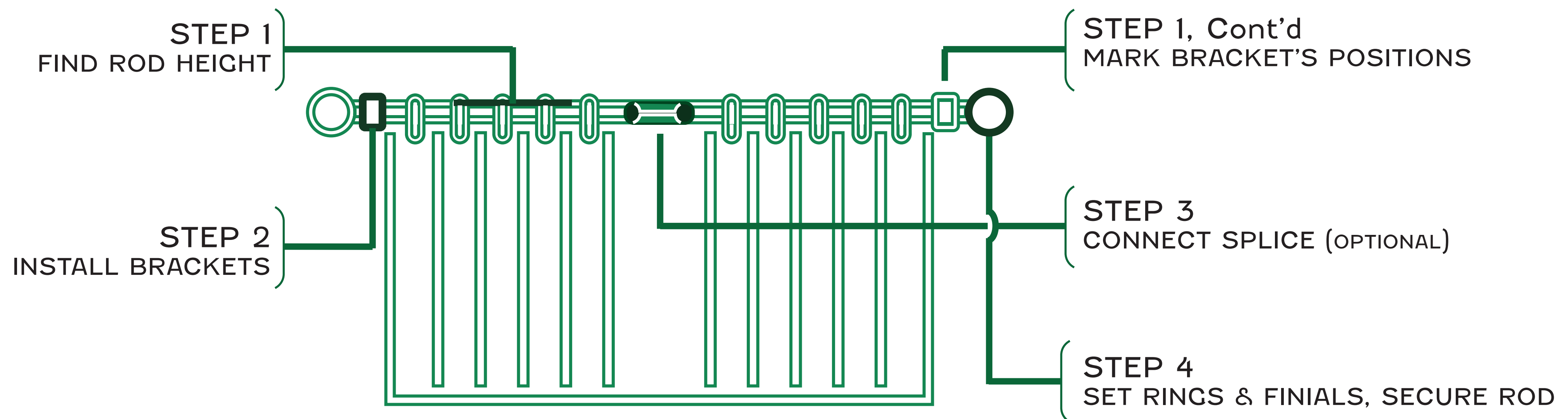


FIRST TIME INSTALLING DRAPES?

DON'T WORRY, WE'LL WALK YOU THROUGH THE WHOLE PROCESS. JUST FOLLOW THESE SIMPLE STEPS AND YOU'RE NEARLY THERE.



PARTS YOU GET

DRAPERY ROD 	FINIALS 	BRACKETS & ALLEN KEY
SCREWS & ANCHORS 	DRAPERY RINGS 	SPLICE

TOOLS YOU WILL NEED

DRILL 	STEP STOOL 	TAPE MEASURE
LEVEL 	PENCIL 	DRILL BIT & PHILLIPS BIT

STEP 1 MARKING BRACKET PLACEMENT

1 Find the Suggested Rod Height on your invoice.

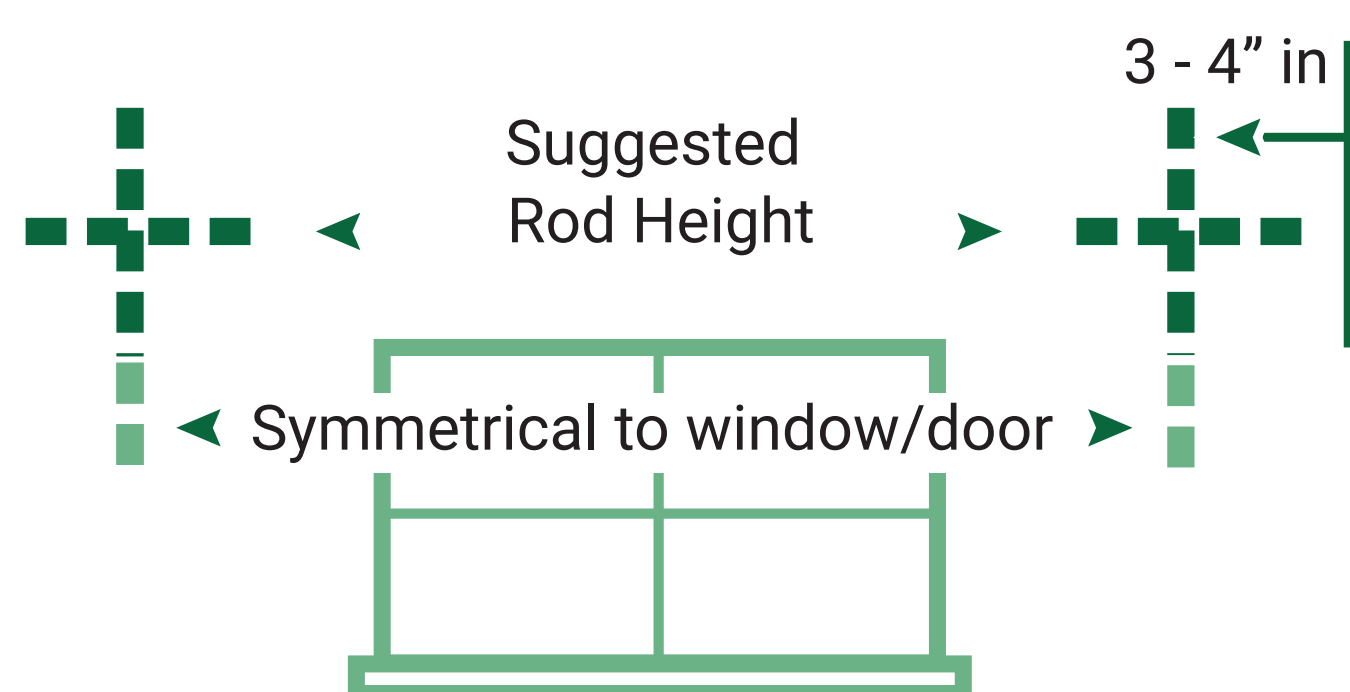
2 Measure the width of your drapery rod.

RIPPLE FOLD DRAPERY

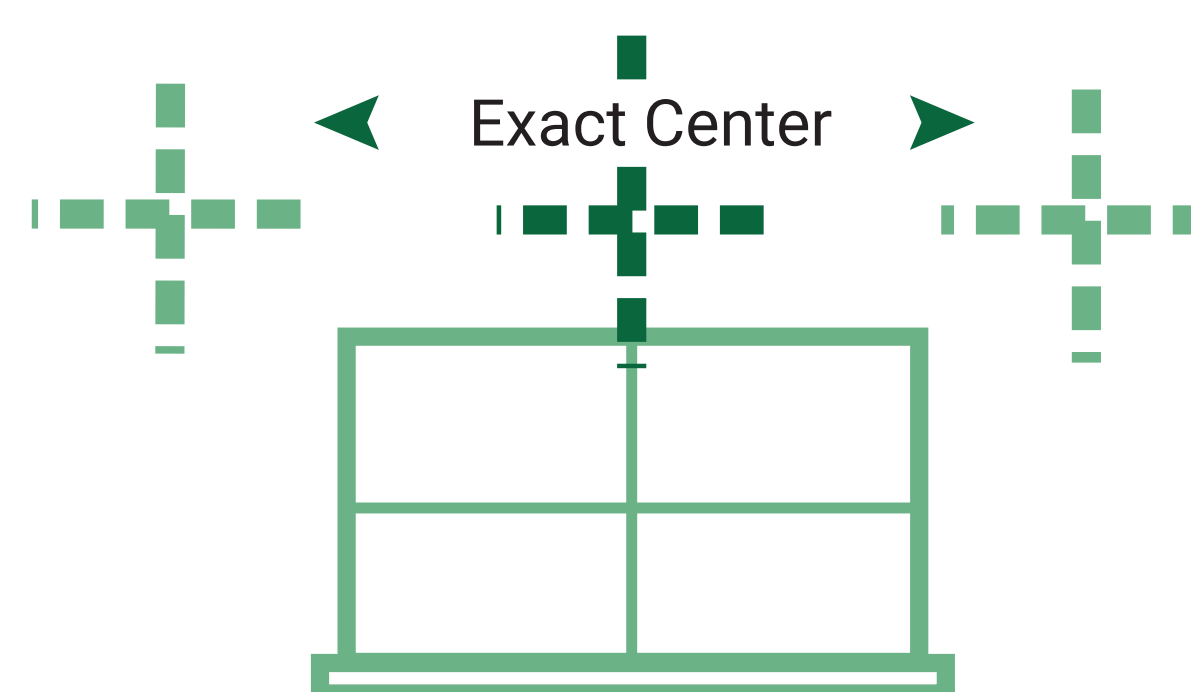
Drape Width(Each): 136"
Drape Length(Each): 95 3/4"
 These drapes were designed assuming a rod/track length of 154" and a rod/track height of 95 3/4" (top of rod/track to floor).

- **Hardware:** 154" White Track (154" x 1 1/2" x 1 1/2") - Wand Draw
- **Lining:** Premium Privacy Lining
- **Drapery Wands:** 30 in. White Wand (x 2)

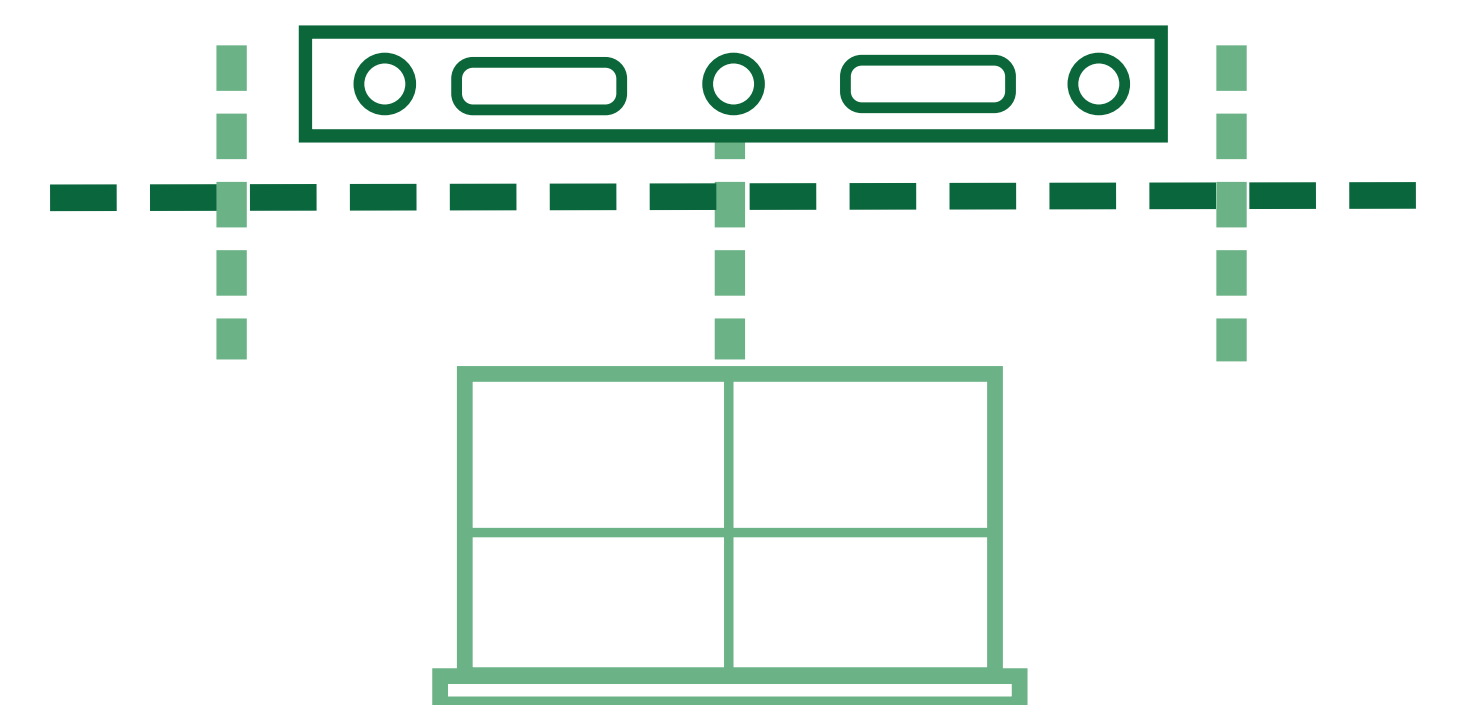
3 Put the end brackets' marks at the Suggested Rod Height, 3-4 inches in from the rod ends, and symmetrical to the window/door.



4 Place the center bracket mark at the exact center between the two end marks.

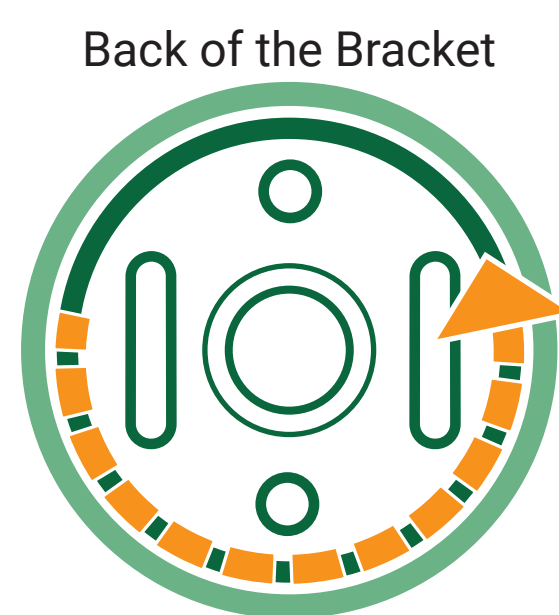


5 Make sure that all marks are level to the floor and placed in a straight line.

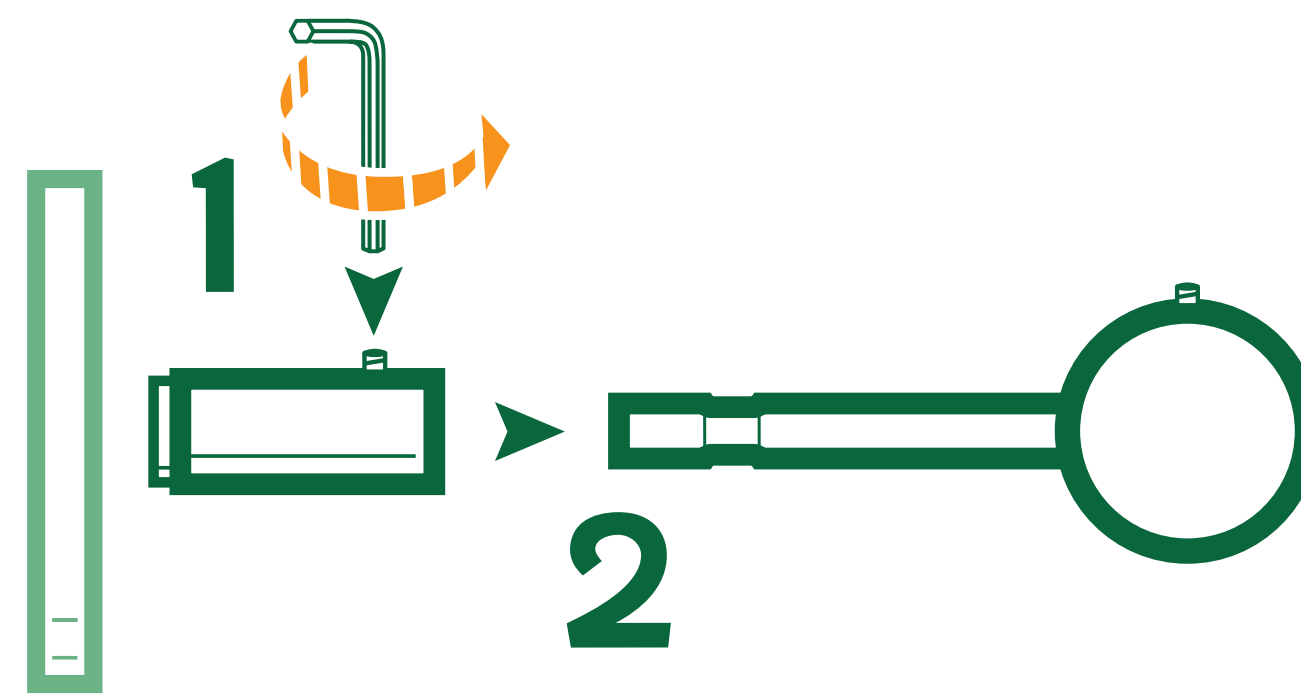


STEP 2 PLACING BRACKET MOUNTING PLATE

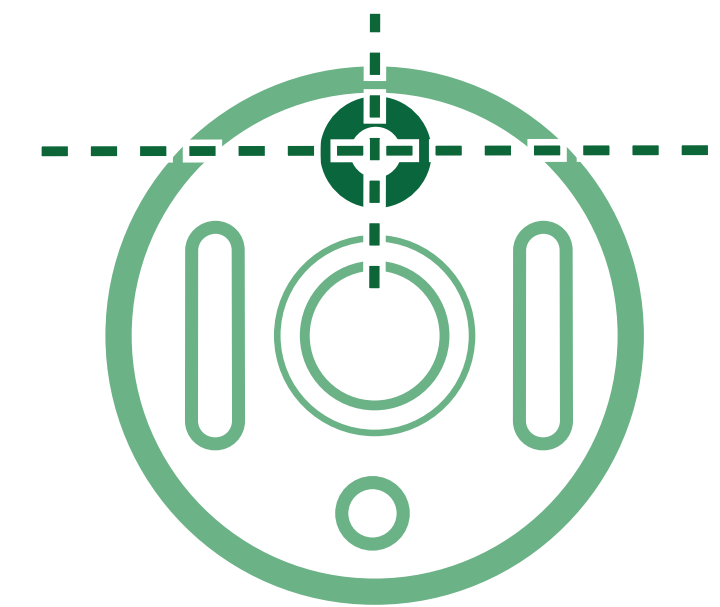
- 1** Detach the mounting plate from the bracket.



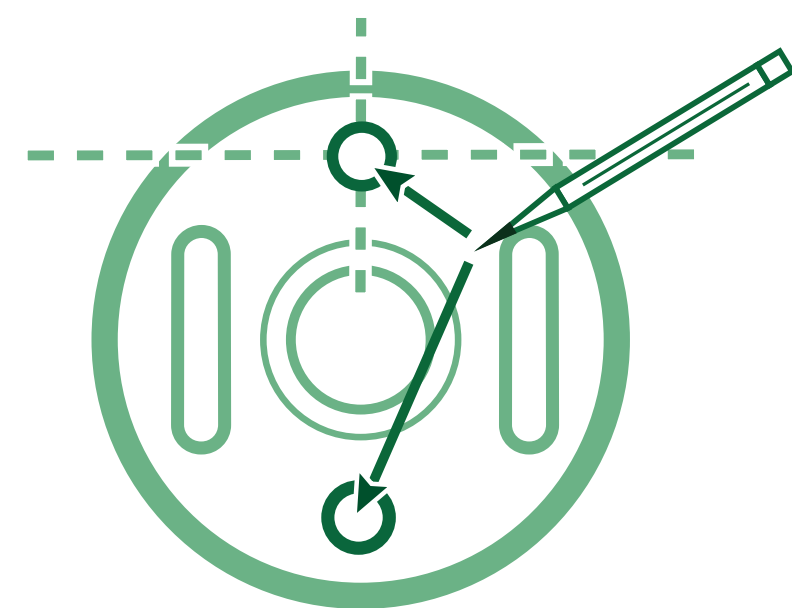
- 2** Detach the rod holding ring from the bracket's base using the Allen key.



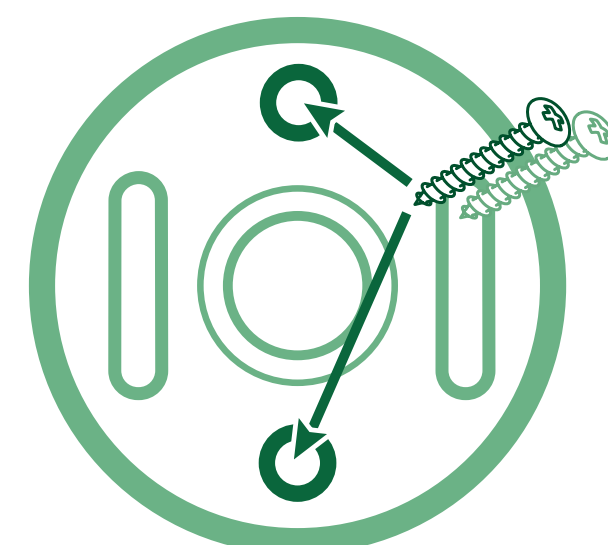
- 3** Position the circular hole of the mounting plate on the mark facing up.



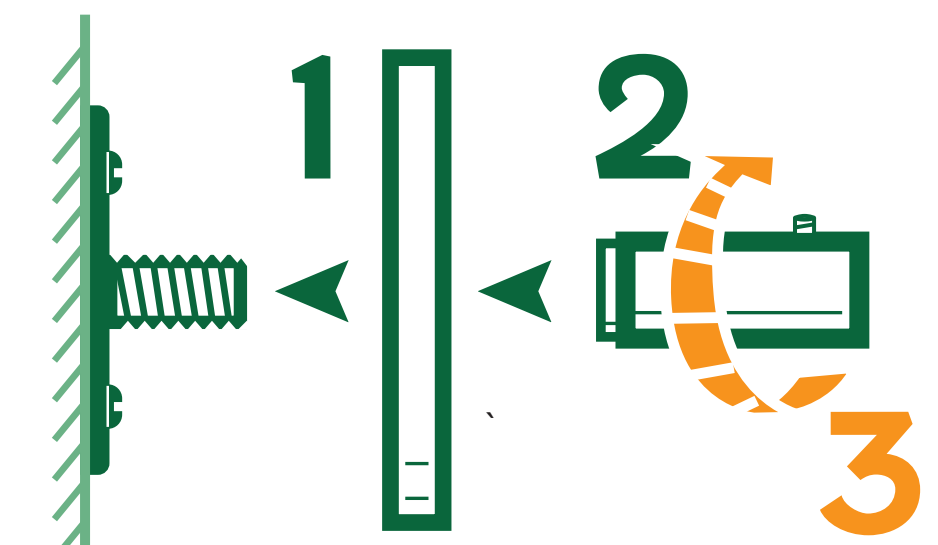
- 4** Use holes to mark the positions for screws or anchors.



- 5** If needed, install the anchors or pre-drill the holes. Drill in the screws to attach the mounting plate.

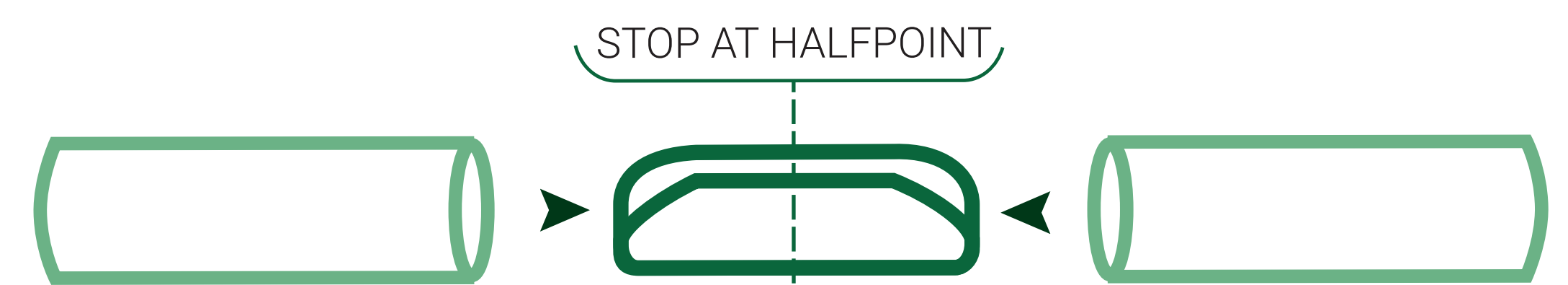


- 6** Screw in the bracket base to the mounting plate.



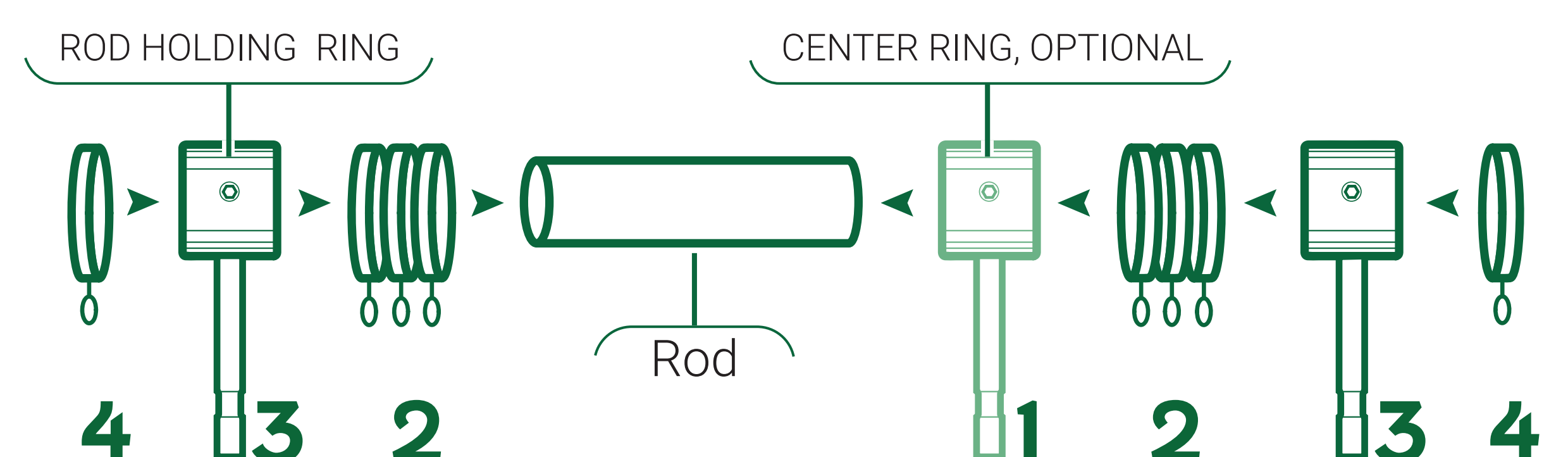
STEP 3 CONNECTING ROD WITH SPLICE (OPTIONAL)

- 1** Insert the splice halfway into the rod. Then attach the other half of the rod to the splice.

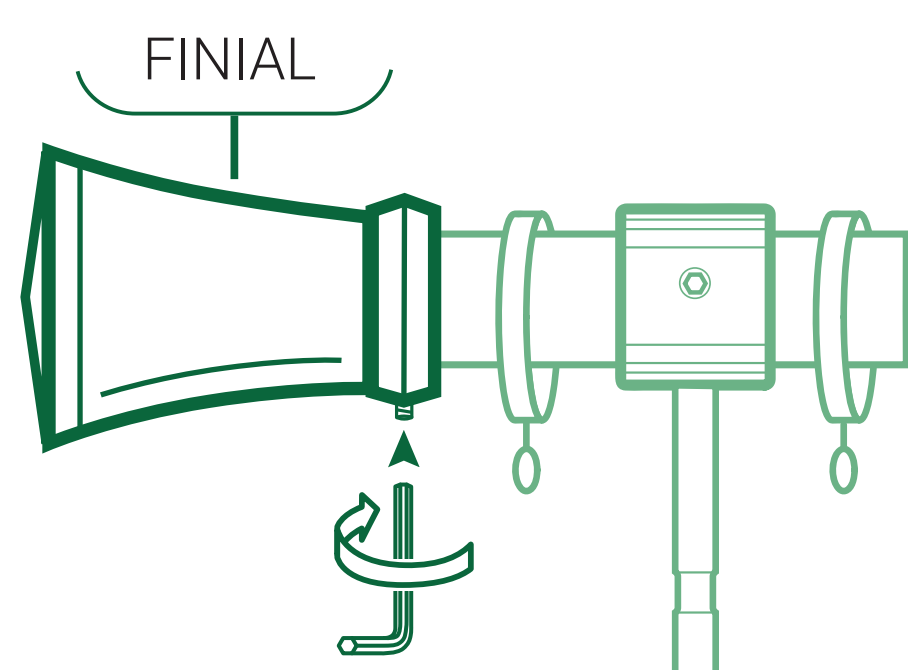


STEP 4 ATTACHING RINGS, FINIALS, AND MOUNTING ROD

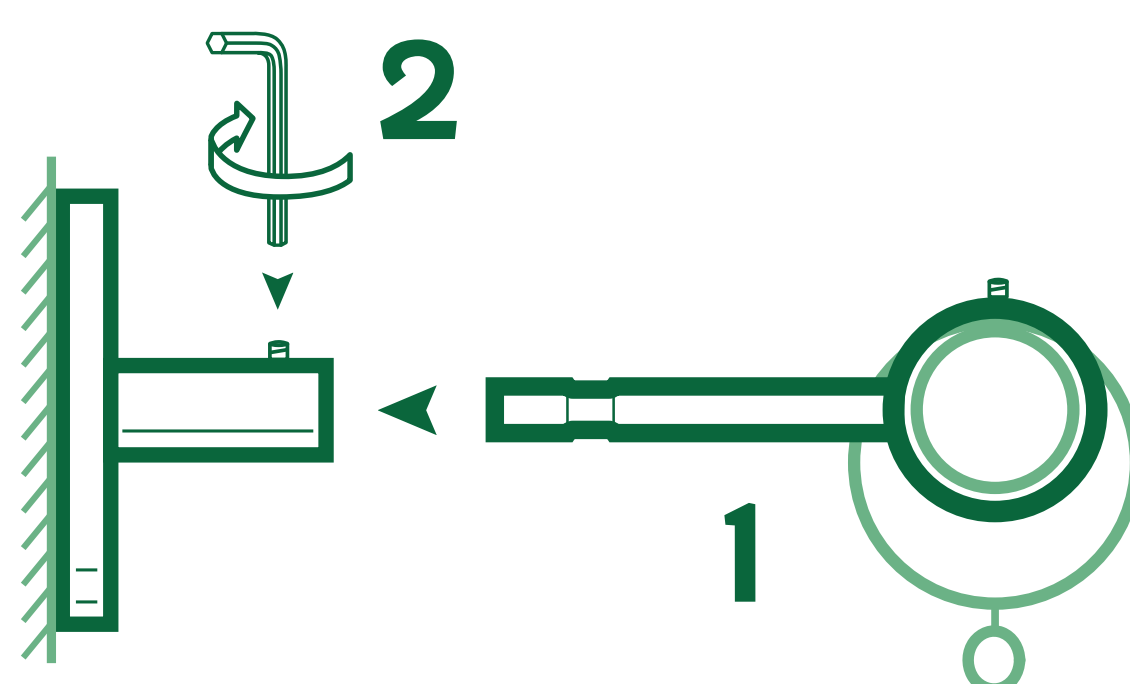
- 1** Start with the optional center bracket (1), then slide in the drapery rings (2), the end brackets (3), and the last drapery ring (4).



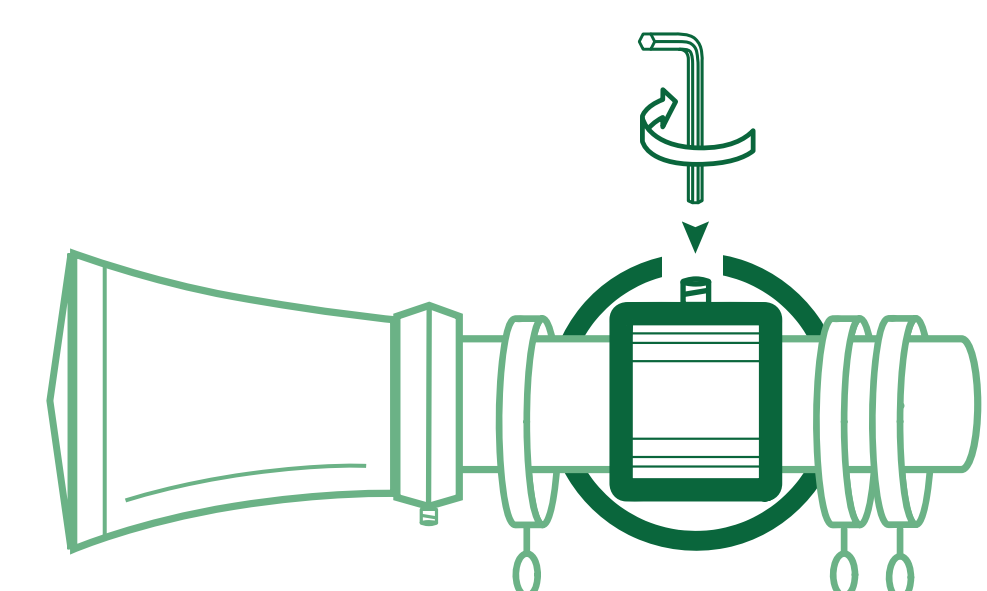
- 2** Secure the finials on the rod ends.



- 3** Secure the bracket holding rings to the base with the Allen key.



- 4** Center the rod on the brackets and secure it with the Allen key.



Congratulations, job well done! Still have questions? Customer Care is available at 800-256-5005.

THANK YOU FOR CHOOSING REGAL DRAPES.

WE ARE PROUD TO MAKE YOUR DRAPES WITH CAREFUL ATTENTION TO EVERY DETAIL. WE HOPE YOU ENJOY YOUR DRAPES FOR MANY YEARS TO COME.